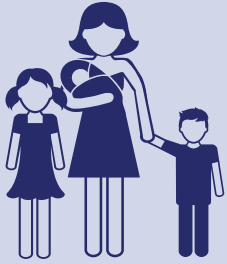
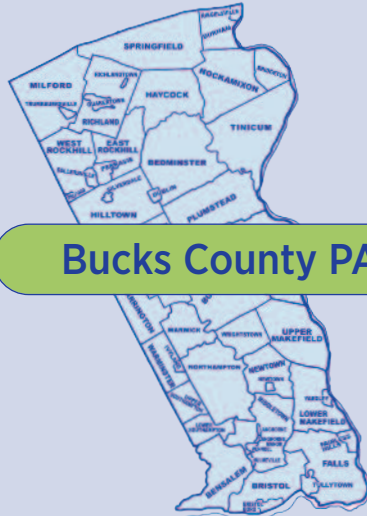


Connecting people with resources to thrive.

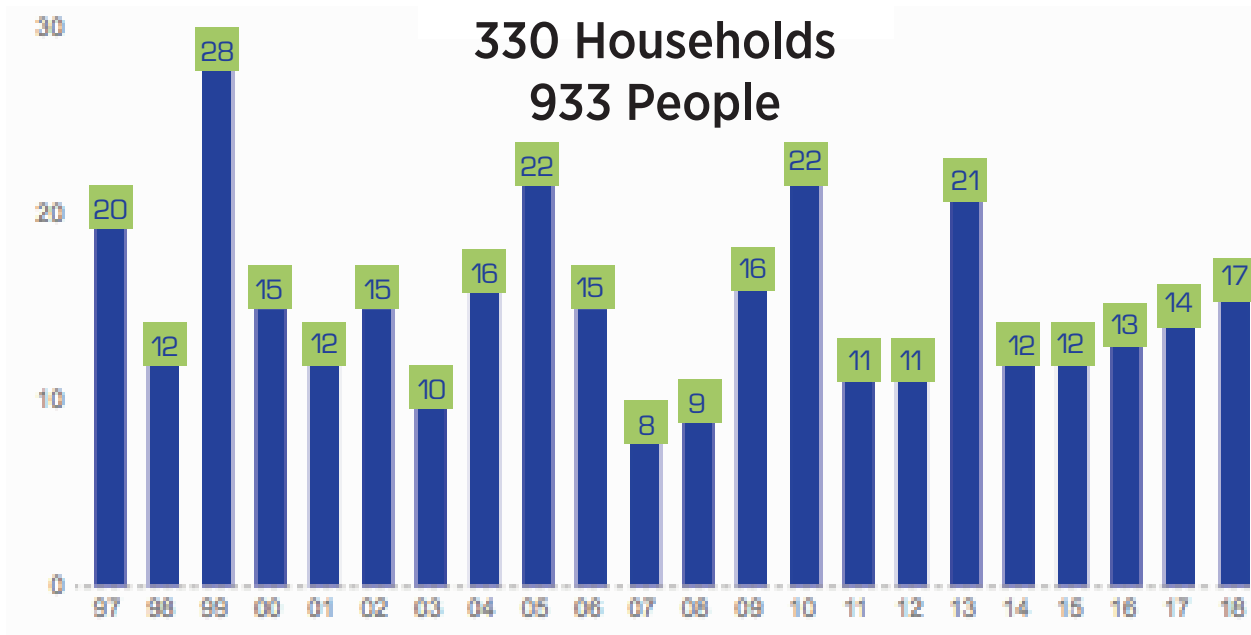


Today, 41,406 people are living in poverty - on less than \$24,600 for a family of 4*



6.6%

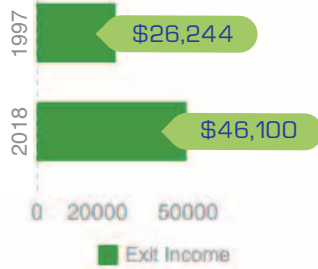
of Bucks County residents live in poverty



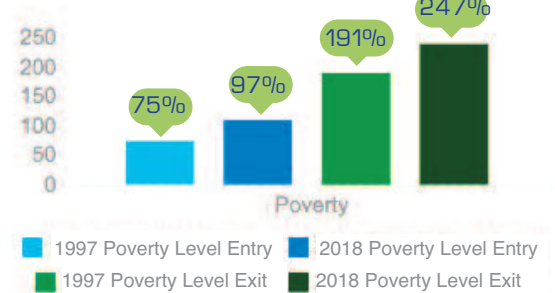
Income at Entry



Income at Exit



Poverty Level



Career Pathways of ES graduates:

Certified Nurse Aide - 19
Licensed Practical Nurse - 52
Registered Nurse - 30
Information Technology Specialist - 5
Retail Sales Associate - 12
Office Manager - 7
Social Worker - 7

Customer Service Rep - 15
Teacher - 7
Medical Assistant - 12
Accounting Assistant - 6
Case Manager - 6
Custodian - 4
Home Health Aide - 3

Auto Technician - 4
Housekeeper/ Cleaner - 4
Administrative Assistant - 10
Food Service Manager - 3
Pharmacy Technician - 3
Hairdresser - 2
Chef - 2

And many more career choices