

Economic Self-Sufficiency Program

1997 - 2019



Bucks County, PA

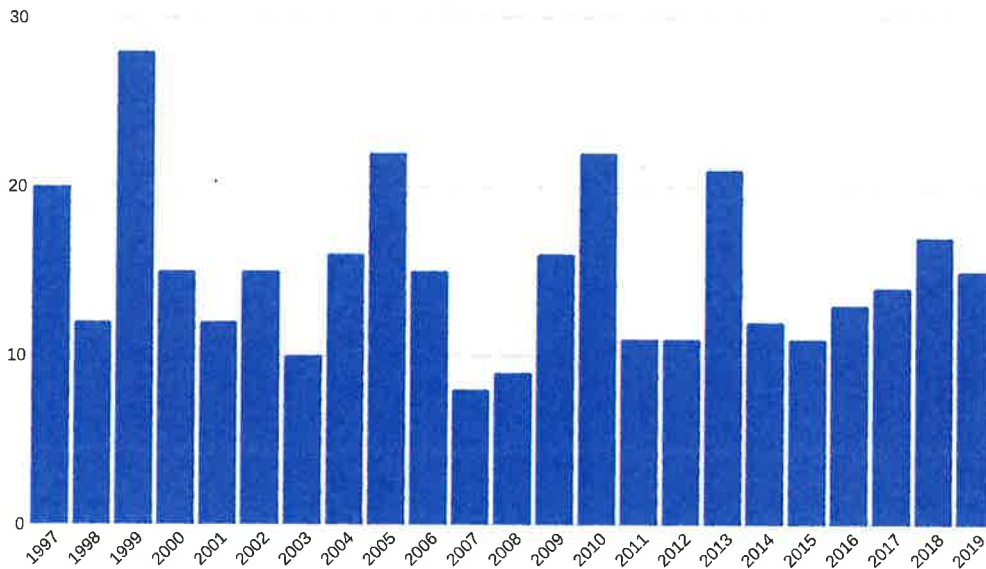


6.1%

of Bucks County residents live in poverty

Today, 38,320 people are living in poverty - on less than \$25,750 for a family of 4*

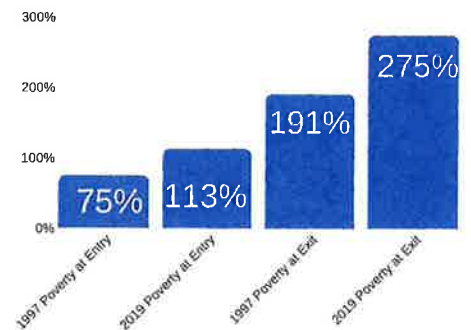
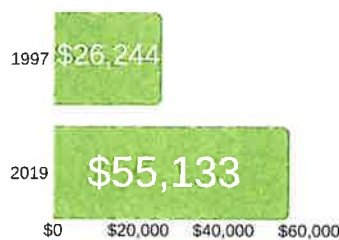
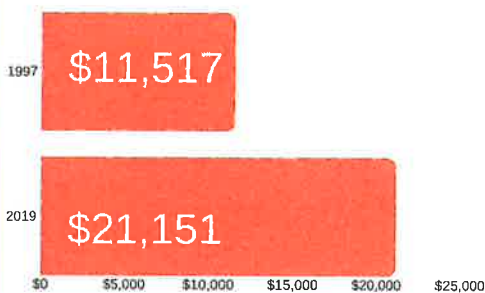
345 Graduate Households
976 People



Income at Entry

Income at Exit

Poverty Level



Career Pathways of ES Graduates:

- Certified Nurse Aide - 20
- Licensed Practical Nurse - 53
- Registered Nurse - 31
- Information Technology Specialist - 6
- Retail Sales Associate - 12
- Office Manager - 7
- Social Worker - 8
- Esthetician - 1

- Customer Service Rep - 15
- Teacher - 7
- Medical Assistant - 12
- Accounting Assistant - 7
- Case Manager - 7
- Custodian - 4
- Home Health Aide - 3
- Program Manager - 1

- Auto Technician - 4
- Housekeeper/Cleaner - 4
- Administrative Assistant - 10
- Food Service Manager - 3
- Pharmacy Technician - 4
- Hairdresser - 2
- Chef - 2
- Marketing Manager - 1

And many more career pathways